

EasyAIR®

“Venturi system” suction units



Excellence in **INNOVATION**
Breakthrough **TECHNOLOGY**
Intelligent **DESIGN**

The EasyAIR® Venturi vacuum generating system units are particularly suitable in all hospital applications in which it is necessary to get values of vacuum up to -800 mbar and where a central facility of vacuum generation for suction is missing, often for technical choice.

STRUCTURE

Such devices are made essentially of an aluminum body housed inside a techno-polymer shock proof shell to protect the unit. Inside, over the “Venturi effect” generating assembly, the needle valve for vacuum adjustment is driven by a large ergonomic control knob having a Push&Lock system, to keep locked the preset vacuum value, and Soft Grip inserts for easy handling and adjusting. The vacuum gauge is available in two end of scale options depending on model (-250 mbar or -1000 mbar) and it is housed in the structure to prevent damages caused by possible shocks received during transport or use. The EasyAIR® Venturi vacuum generating system units are manufactured with outlet threaded connection for screwing in the usual collection containers for suctioned fluids, or for direct connection to the EasySAFE® PLUS safety jar, through a specific quick release integrated connection. The I/O switch button allows the operator to quickly stop and reactivate the suction, keeping unchanged the previous vacuum preset value. The extreme rationality and simplicity, combined with the sophisticated technical execution, allow both operators and patients to appreciate the safety and reliability of this medical device.

Main information

Air

As it is well known, the physical principle called “Venturi” allows to get depression from a fluid under pressure. This is obtained, in case of these devices, using medical compressed air coming from the centralized distribution plant.



Being the system working with a principle where medical air under pressure goes released to the environment, the equipment has a high efficiency silencer reducing the noise to allow an adequate level of comfort for patients and operators. The system fits a special device expressly designed and realized with an one-way membrane safety valve, to protect the patient against accidental back pressures.

Related products



Safety jars
from p. 89



Collection jars
from p. 96



Probes
and Accessories
from p. 103

	EasyAIR® 250	EasyAIR® 1000
SIZES (LxWxH)	89x123x141 mm	89x123x141 mm
WEIGHT	0.54 Kg	0.57 Kg
MAXIMUM SUCTION FLOW	28 L/min. ±2 L/min. at -220 mbar	40 L/min. +5 L/min. at -800 mbar
VACUUM GAUGE	0 ÷ -250 mbar	0 ÷ -1000 mbar
MAXIMUM ADJUSTABLE DEPRESSION (WITH PLATE PRESSURE ±10%)	-220 mbar ±15 mbar	-800 mbar -25 mbar
SAFETY VALVE AGAINST BACK PRESSURE EXCESS	preset with anti clogging system	N/A
AIR CONSUMPTION AT THE MAXIMUM SUCTION VALUE	25 L/min. ±2 L/min.	60 L/min. ±2 L/min.
NOISE LEVEL	<60 dB	<70 dB
GAS AND SUPPLIED PRESSURE	compressed air 400 kPa (4.0 bar) ±10%	
STANDARD INLET CONNECTIONS	ISO G. 1/4" M. · 1/4" NPT M.	
STANDARD OUTLET CONNECTION	ISO G. 1/2" M. + quick release system for EasySAFE® or EasySAFE® PLUS safety jar connection	

- 1 **Vacuum gauge** with colored sectors and double scale (mbar/hPa or mmHg), for easy reading of set vacuum values.
- 2 **Vacuum adjusting knob** with Push&Lock system and Soft Grip inserts for easy handling.
- 3 **I/O push** switch button.
- 4 Quick release system for **EasySAFE® plus** or **EASYSAFE®** safety jar connection.



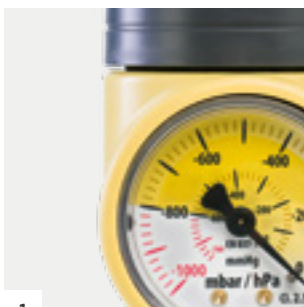
▶ WATCH THE VIDEO



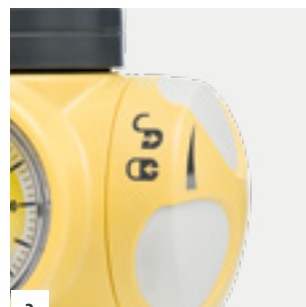
EasyAIR® 250

EasyAIR® 1000
with EasySAFE® plus safety jar
(optional)

EasySAFE® plus safety jar p. 90



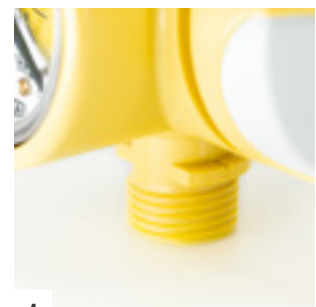
1



2



3



4