

# EASYCARE®

## Pressure regulators

The EASYCARE® two stage pressure regulator is suitable for direct mounting on oxygen cylinders.

### STRUCTURE

Its structure is very compact and lightweight and it is particularly suitable for oxygen therapy. The body is made of brass and chrome-plated aluminum with an integrated impact resistant polymer calibrated orifices flowmeter with 10 options of flow oxygen supply. It is equipped with a pre-calibrated overpressure safety valve, and with a terminal unit (optional) connected to the first stage chamber which allows to get an additional and separate source of oxygen or air supplied at 4 bar. The inlet connection is offered in several options, as per the different reference standards of the destination Countries, and the outlet too is available with threads adapted to different applications.

### WORKING PRINCIPLE AND GAUGE

The pressure calibration of the individual stages is fixed and a pressure gauge allows to get view of the cylinder contents. A protective silicone cover prevents gauge damages caused by possible shocks received during transport or use.

## Main information



The inlet connection is offered in several options, as per the different reference standards of the destination Countries.



The small size structure and the particular technical configuration allow the EASYCARE® pressure reducers to get flows of medical gases like oxygen dispensed with extreme accuracy, even in the most difficult conditions, such as in mobile units of emergency.

## Related products



Humidifiers  
from p. 47

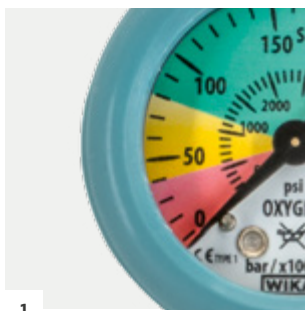
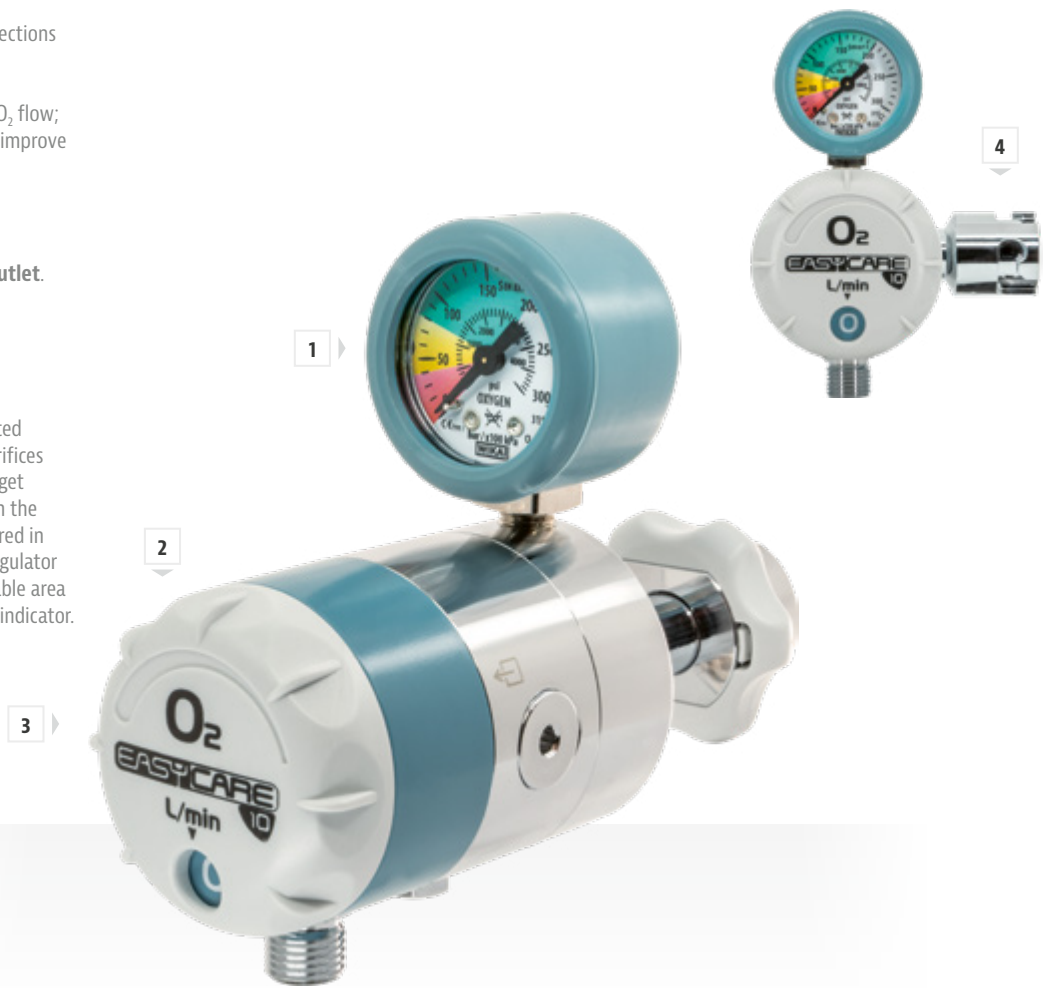


Cylinder inlet  
connections  
p. 57

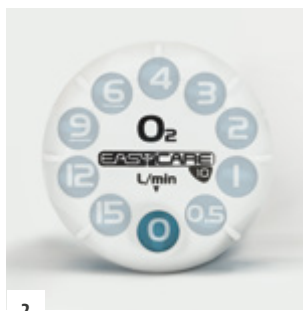
<b>SIZES (LxWxH)</b>	147x55x117 mm (with UNI 11144 cylinder connection and without optional terminal unit)
<b>WEIGHT</b>	0.81 Kg (without optional outlet)
<b>MAXIMUM INLET PRESSURE</b>	200 bar
<b>GASES OPTIONS</b>	O <sub>2</sub> · AIR
<b>STANDARD FLOW RANGE</b>	6 L/min. · 14 L/min. · 15 L/min. · 30 L/min. · 50 L/min.
<b>FLOW RATES</b>	10 (0+9 preset values)
<b>FLOWMETER ACCURACY</b>	±10% read value or ±0.5 L/min. if greater between 10% and 100% E.O.S. ±10% read value or ±0.2 L/min. if greater for flows < 10% E.O.S.
<b>INLET CONNECTION TO THE CYLINDER</b>	UNI 11144 · EN 850 · NF-E 29-656 · BS 341-3 · DIN 477-1 · ISO 5145 · CGA 540
<b>OUTLET CONNECTION</b>	1/4" ISO 3253 M. · 3/8" ISO 3253 M. · M12x1.25 M. · 9/16" UNF EN 13544-2 M.
<b>TERMINAL UNIT (OPTIONAL)</b>	AFNOR NF-S 90-116 · UNI 9507 · BS 5682 · DIN 13260 · SS 875 24 30

- 1 Gauge with colored sections and double scale.
- 2 Easy reading of the O<sub>2</sub> flow; ten reading values to improve low flows regulation.
- 3 Ergonomic knob.
- 4 Detail of optional outlet.

In fact, being the integrated flowmeter a calibrated orifices type, there is no need to get it always and only used in the upright position, as required in case of use of pressure regulator fitting conventional variable area flowmeters with vertical indicator.



1



2



3



4

### Regulation values for the different end of scale flows

		STEP VALUES									
END OF SCALES	6 L/min.	0.00	0.25	0.50	1.00	1.50	2.00	3.00	4.00	5.00	6.00
	14 L/min.	0.00	0.50	1.00	2.00	4.00	6.00	8.00	10.00	12.00	14.00
	15 L/min.	0.00	0.50	1.00	2.00	3.00	4.00	6.00	9.00	12.00	15.00
	30 L/min.	0.00	1.00	2.00	4.00	8.00	12.00	16.00	20.00	25.00	30.00
	50 L/min.	0.00	1.00	2.00	3.00	6.00	9.00	12.00	15.00	30.00	50.00