

# CONNECTIONS AND ACCESSORIES

FOR OXYGEN THERAPY DEVICES

The flowmeters for oxygen therapy applications can be supplied completed with probes of our production for direct coupling into the terminal units.

## OXYGEN PROBES WITH THREAD CONNECTION



**AFNOR NF-S 90-116** probe, thread ISO G. 1/4" F.



**AFNOR NF-S 90-116 type EASYFIX®** probe, thread ISO G. 1/4" F.



**UNI 9507** probe, thread ISO G. 1/4" F.



**BS 5682** probe, thread ISO G. 1/4" F.



**DIN 13260** probe, thread ISO G. 1/4" F.



**SS 875 24 30** probe, thread ISO G. 1/8" M. or ISO G. 1/4" F.



**JIS T 7101** probe, thread ISO G. 1/8" M.



**SANS 1409** probe, thread ISO G. 1/4" F.



**OHMEDA** probe, thread ISO G. 1/4" F.

Otherwise, the pressure regulators are always supplied with special oxygen cylinder connections designed and made according to the various national and international standards. The oxygen flowmeter probes support frequent connections and detachments to the medical gas distribution systems, while the pressure regulators must guarantee perfect sealing

and safety, when connected to the gas cylinders. The following pages contain main information regarding the available range of probes with thread connection and hose connection, for mounting on wall rails or floor stands. The pressure regulators cylinder connections too are available in the most popular options. Detailed or specific solutions are available on request.

## OXYGEN PROBES WITH HOSE CONNECTION



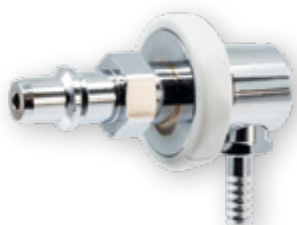
**AFNOR NF-S 90-116** type **EASYFIX®** probe, hose connection Ø 6 mm.



**UNI 9507** probe, hose connection Ø 6 mm.



**BS 5682** probe, hose connection Ø 6 mm.



**DIN 13260** probe, hose connection Ø 6 mm.



**SS 875 24 30** probe, hose connection Ø 6 mm.



**JIS T 7101** probe, hose connection Ø 6 mm.



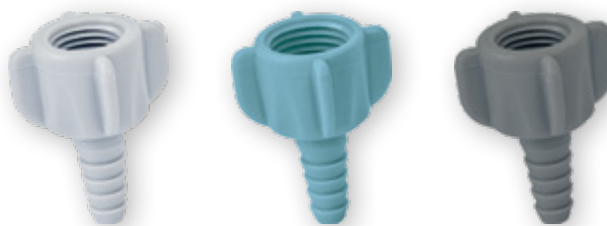
**SANS 1409** probe, hose connection Ø 6 mm.



**OHMEDA** probe, hose connection Ø 6 mm.

## FLOWMETER OUTLET HOSE CONNECTION

Polypropylene hose connector, three inlet threads (1/4" ISO 3253 F. 9/16" UNF EN 13544-2 F.M12x1.25 F.), outlet tubing Ø 6÷9 mm. (supplied in packs of 5 pieces)



## RAIL CLAMPING SYSTEMS FOR OXYGEN FLOWMETERS



ABS clamp bracket for rail 30x10 mm and 50x10 mm, with nipple threaded ISO G. 1/4" F. and hose connector Ø 6 mm.



Anodized aluminum wedge for OHMEDA rail clamp bracket, with nipple threaded ISO G. 1/4" F. and hose connector Ø 6 mm.



Anodized aluminum OHMEDA rail clamp bracket.

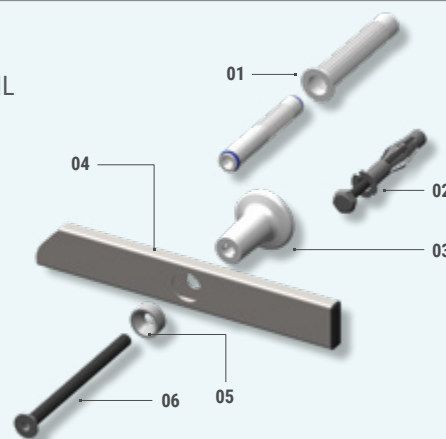
## STAINLESS STEEL RAIL



Stainless steel rail 30x10 mm, brushed, with spacers and fittings, various lengths.

### DIRECTORY - COMPONENTS DETAIL

- 01. Chemical fixings
- 02. Plasterboard fixings
- 03. Rail spacer
- 04. Rail
- 05. Bolt washer
- 06. Bolt



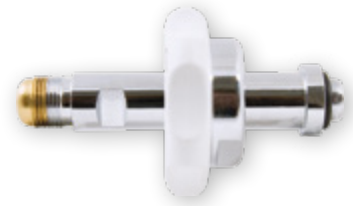
## CYLINDER INLET CONNECTIONS FOR OXYGEN PRESSURE REGULATORS



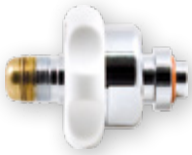
**EN 850 (or CGA 870)** "pin-index" yoke cylinder connection.



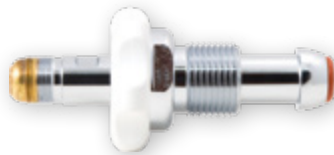
**AFNOR NF-E 29-656** cylinder connection.



**DIN 477-1** cylinder connection.



**UNI 11144** cylinder connection.



**BS 341-3** "bull nose" cylinder connection.



**CGA 540** cylinder connection.